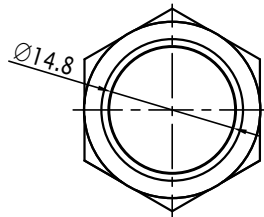
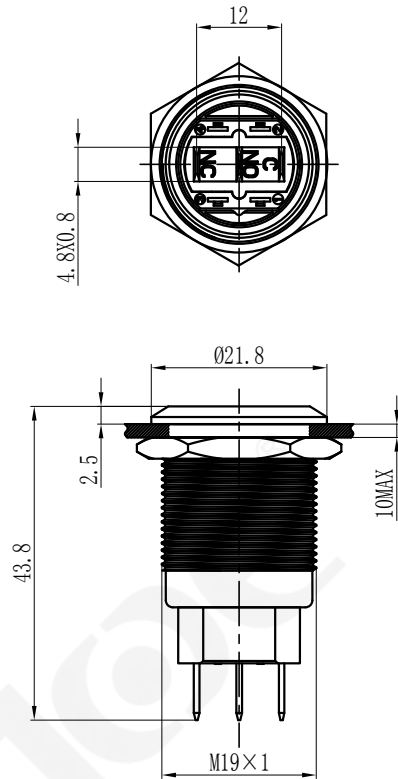
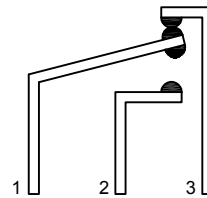


UNIT: mm (毫米)

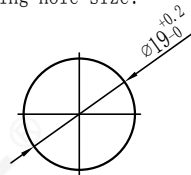


开关结构说明:
Switch structure description:



1、2---NO
1、3---NC

安装孔尺寸:
Mounting hole size:



性能要求:

Performance requirements:

- 防护等级: IP67;
Protection grade: IP67;
- 接触电阻: $\leq 50m\Omega$;
Contact resistance: $\leq 50m\Omega$
- 绝缘电阻: $\geq 100M\Omega$;
The insulation resistance: $\geq 100M\Omega$
- 抗电强度: AC2500V, 1min, 无闪烁、击穿;
Electrical resistance: AC2500V, 1min, no flicker and breakdown;

技术要求:

Technical requirements:

- 表面光洁, 平整无毛刺;
The surface is smooth without burr;
- 参数/批次字迹清晰, 无错位;
Clear handwriting of parameters/batches without any dislocation;
- 电气参数: $I_{th}: 10A$ $U_i: 250V$;
Electric parameter: $10A$ $U_i: 250V$;
- 工作环境温度: $-25^\circ C \sim +80^\circ C$;
Working environment temperature: $-25^\circ C \sim +80^\circ C$;
- 动作形式: 自锁式;
Operation type: Latching ;
- 动作行程: 2.0mm;
Movement stroke: about 2.0mm
- 连接形式: 配套接插件/焊接导线;
Connection form: Matching connectors/Welding wire;
- 拧紧力矩: 约 0.6Nm;
Tightening torque: About 0.6Nm;
- 开关组合: 1NO1NC;
Contact configuration: 1NO1NC;
- 外观材料: 按键: PC/黄铜; PC/不锈钢
外壳: 黄铜/不锈钢
底座: PA66
触点: 银合金
Appearance material: Button surface: PC/Nickel-Plated Brass; PC/stainless steel;
Housing: Nickel-Plated Brass/stainless steel;
Pedestal: PA66;
Contact silver alloy
- 未标注公差按照 GB/T 1804-m 级;
Unmarked tolerance shall be in accordance with GB/T 1804-m class.

描 图

描 校

底 图 号

装 订 号

					YUEQING DAHE ELECTRICAL CO., LTD.	
					乐清市大和电气有限公司	
标记		处数	更改文件号	签字	日期	名称(TITLE):
DR.	APPD.	SCALE.	countersign.	Date.		M19 Metal waterproof indicator light
制 图	审 核	比 例	会 签	日 期		M19金属防水按钮开关
施		1:1		2023.1.5		图号(DWG NO):
PW.		P.	第1页 共1页(1/1)			HBDS1-D19C-11Z/J/S
单 重		页 码				