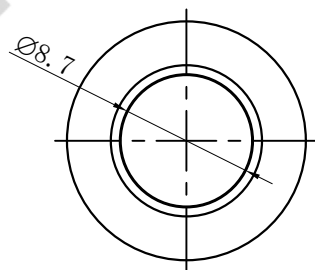
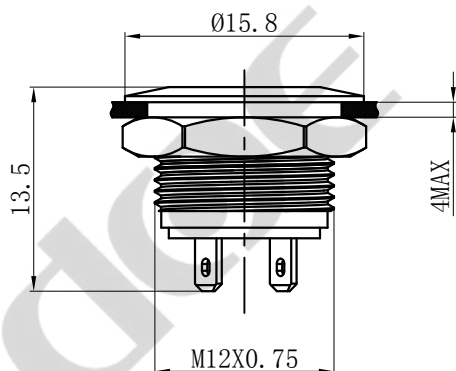
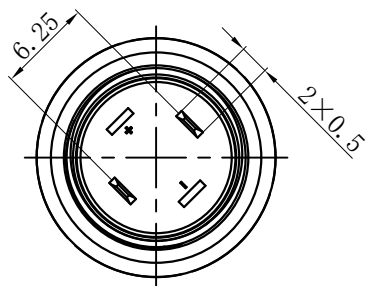
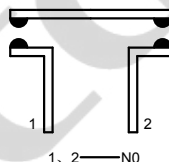


UNIT: mm (毫米)

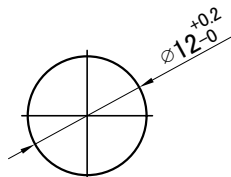
cdoe



开关结构说明:
Switch structure description:



安装孔尺寸:
Mounting hole size:



性能要求:

Performance requirements:

1. 防护等级: IP67;
Protection grade: IP67.
2. 接触电阻: $\leq 50\text{m}\Omega$;
Contact resistance: $\leq 50\text{m}\Omega$.
3. 绝缘电阻: $\geq 100\text{M}\Omega$;
The insulation resistance: $\geq 100\text{M}\Omega$
4. 抗电强度: AC250V, 1min, 无闪烁、击穿;
Electrical resistance: AC250V, 1min, no flicker and breakdown;
5. 寿命: 在额定负载下动作8万次无异常。
life: under the rated load movement 80000 times without exception.

技术要求:

Technical requirements:

1. 表面光洁, 平整无毛刺;
The surface is smooth without burr;
2. 参数/批次字迹清晰, 无错位;
Clear handwriting of parameters/batches without any dislocation;
3. 电气参数: I_{th} : 50mA U_i : DC12V;
Electrical parameters: 50mA U_i : DC12V;
4. 工作环境温度: $-25^\circ\text{C} \sim +65^\circ\text{C}$;
Working environment temperature: $-25^\circ\text{C} \sim +65^\circ\text{C}$;
5. 动作形式: 自复式;
Operation type: Momentary;
6. 动作行程: 约0.5mm;
Movement stroke: about 0.5mm
7. 连接形式: 配套接插件/焊接导线;
Connection form: Matching connectors/Welding wire;
8. 拧紧力矩: 约0.4Nm;
Tightening torque: about 0.4Nm;
9. 开关组合: 1NO;
Contact configuration: 1NO;
10. 外观材料: 按键: 不锈钢; 黄铜
外壳: 不锈钢; 黄铜
底座: PBT;
Appearance material: Button surface: Stainless steel; Nickel-Plated Brass
Housing: stainless steel; Nickel-Plated Brass
Pedestal: PBT;
11. 未标注公差按照GB/T 1804-m级。
Unmarked tolerance shall be in accordance with GB/T 1804-m class.

描 图

描 校

底 图 号

装 订 号

					YUEQING DAHE ELECTRIC CO., LTD.	
					乐清市大和电气有限公司	
标 记	处 数	更改文件号	签 字	日 期	名称(TITLE): M12 metal waterproof button switch	
DR. 制 图	APPD. 审 核	SCALE. 比 例	countersign. 会 签	Date. 日 期	M12金属防水按钮开关	
黄	陈秋霞	2:1		2022. 6. 1	图号(DWG NO): HBDGQ12SF-10W-J-S(N)	
PW. 单 重		P. 页 码	第1页 共1页 (1/1)			